

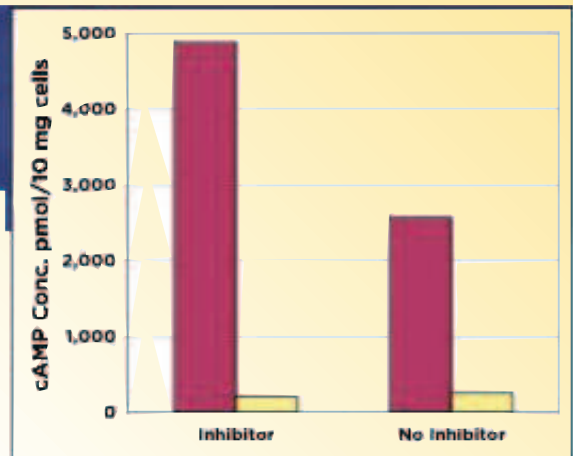
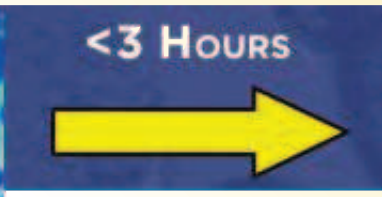
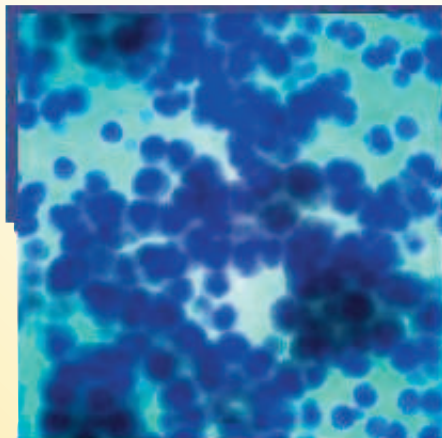
Total Cyclic AMP EIA Kit

From Cells to Results in < 3 Hours

- ⇒ Measure cAMP in lysed cells, tissue, plasma, saliva, urine or TCM
- ⇒ Colour-coded, simple protocol
- ⇒ Reduced sample requirements
- ⇒ Measure to less than 4 fmol cAMP per sample
- ⇒ High optical density in 2.5 hours
- ⇒ Sensitivity : Sensitivity was 3.9 fmol/well in the Acetylated Format.

K019-H1 96 Wells 250 Euro HT*

**Valid until
dec 31st,
2010*



Prostaglandin E2 EIA Kit

PGE2 REGULAR KIT

K018 H1

250,00 EURO HT*

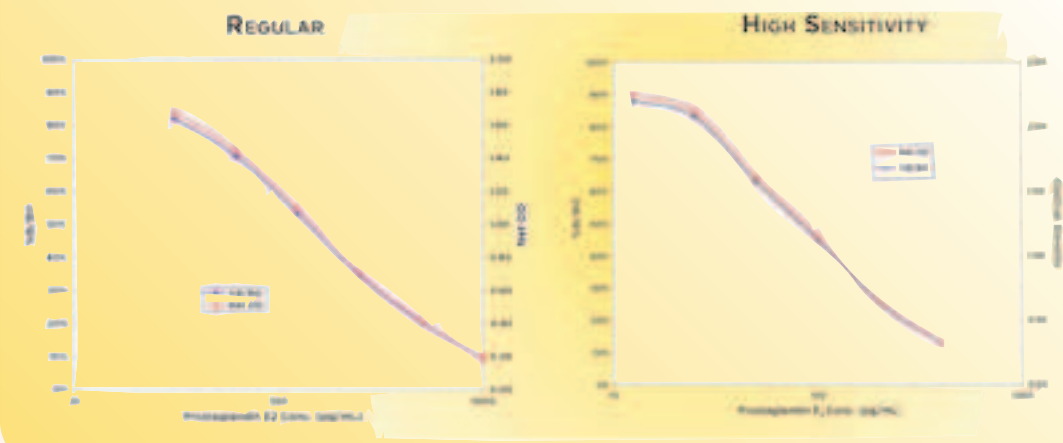
PGE2HIGH SENSITIVITY

K018 H1X

250,00 EURO HT*

- ⇒ High optical density
- ⇒ Validated for multiple samples types
- ⇒ Measure <500 fg PGE2
- ⇒ Monoclonal antibody based
- ⇒ From the scientist that developed the most sensitive PGE2 Kit

**Valid until
Dec 31st,
2010*



EUROMEDEX

Other Kits

Catalog #	DetectX® Kit	Size	Euro
K015-F1	Acetylcholine Esterase Fluorescent Activity kit (2 plate)	2x96 well plates	227
K016-F1	Buerylcholinesterase Fluorescent Activity kit (2 plate)	2x96 well plates	227
K014-H1	Corticosterone Enzyme Immunoassay kit	1x96 well plate	200
K003-H1	Cortisol Enzyme Immunoassay kit - 1 Strip plate	1x96 well plate	180
K003-H1W	Cortisol Enzyme Immunoassay kit - 1 Whole plate	1x96 well plate	180
K002-H1	Creatinine Detection Kit (2 Plate Kit)	2x96 well plates	177
KB02-H1	Creatinine Serum Kit (2 Plate Kit)	2x96 well plates	177
K019-H1	Cyclic AMP Total EIA Kit (One Plate)	1x96 well plate	250
K012-H1	Cystatin C Immunoassay Kit	1x96 well plate	295
K001-F1	Formaldehyde Detection Kit	1x96 well plate	318
K006-H1	Glutathione Colorimetric Detection kit (4 plate)	4x96 well plate	259
K006-F1	Glutathione Fluorescent Detection Kit	1x96 well plate	250
K009-F1	Glutathione Reductase Fluorescent Kit	1x96 well plate	250
K008-F1	Glutathione S-Transferase Fluorescent Kit	1x96 well plate	250
K010-F1	HDM Fluorescent Kit (2 plate)	2x96 well plates	318
K013-H1	Hemoglobin Colorimetric Detection kit (2 plate)	2x96 well plates	205
K011-F1	P450 Demethylation Activity kit (2 plate)	2x96 well plates	227
K007-F1	PdX™ Plalladium API Fluorescent Kit	1x96 well plate	541
K018-HX1	PGE2 Enzyme Immunoassay High Sensitivity kit	1x96 well plate	259
K018-H1	PGE2 Enzyme Immunoassay kit	1x96 well plate	259
K004-H1	Retinol Binding Protein EIA Kit	1x96 well plate	227
K005-F1	Thiol Fluorescent Detection Kit	1x96 well plate	223
KU04-H1	Urinary Retinol Binding Protein Kit	1x96 well plate	318



ARBOR
ASSAYS

**Valid
until
Dec 31st, 2010*

EUROMEDEX

24, rue des Tuileries-BP 684 67460 SOUFFELWEYERSHEIM

Tél : 03 88 18 07 22 Fax : 03 88 18 07 25

e.mail : research@euromedex.com Internet : www.euromedex.com